

# EAGLE



# CONCRETE PUMPING & PLACEMENT PRODUCTS

[www.jgbhose.com](http://www.jgbhose.com)

JGB Headquarters  
115 Metropolitan Drive  
Liverpool, NY 13088  
(315) 451-2770

Buffalo Branch  
2540 Walden Ave.  
Cheektowaga, NY 14225  
(716) 684-8224

Southeast Regional Hub  
1407 Westinghouse Blvd.  
Charlotte, NC 28273  
(704) 588-9920

St. Louis Branch  
9707 Green Park Industrial Dr.  
St. Louis, MO 63123  
(314) 487-3144

Williston Branch  
520 Bean Dr.  
Williston, ND 58801  
(701) 570-2945

Houston Branch  
619 E Sam Houston Pkwy.  
Suite 200  
Pasadena, TX 77503  
(281) 930-7777

Connect with us:



[www.jgbhose.com](http://www.jgbhose.com)

## EAGLECRETE® 1233 HOSE



<b>Application:</b>	1233 psi plaster, grout and shotcrete material handling hose.
<b>Tube:</b>	Black Conductive Natural Rubber
<b>Cover:</b>	NR/SBR Blend
<b>Reinforcement:</b>	Spiral Textile
<b>Couplings:</b>	Heavy Duty, Victaulic, NPT and Metric
<b>Temperature:</b>	-40°F to 180°F

Part #	ID	OD	Plies	WP	Burst	Weight	Weight FWC*
	in	in		psi	psi	lbs/ft	lbs/ft
060-0242-1000	1 ½	2.20	4	1233	2465	1.07	3.00
060-0322-0800	2	2.76	4	1233	2465	1.43	4.70
060-0402-1000	2 ½	3.31	4	1233	2465	1.96	6.85
060-0482-1000	3	4.01	6	1233	2465	2.72	10.08
060-0562-1000	3 ½	4.64	6	1233	2465	3.51	12.24
060-0642-1000	4	5.12	6	1233	2465	3.96	17.07
060-0802-1000	5	6.10	6	1233	2465	4.90	25.17

\* Filled with Concrete

## EAGLECRETE® 1300 HOSE



<b>Application:</b>	1300 psi cement & concrete material handling hose.
<b>Tube:</b>	Black Conductive Natural Rubber
<b>Cover:</b>	NR/SBR Blend
<b>Reinforcement:</b>	Spiral Wire
<b>Couplings:</b>	Heavy Duty, Victaulic, NPT and Metric
<b>Temperature:</b>	-40°F to 180°F

Part #	ID	OD	Plies	WP	Burst	Weight	Weight FWC*
	in	in		psi	psi	lbs/ft	lbs/ft
060-0322-1300	2	2.76	2	1300	2900	2.04	5.31
060-0402-1300	2 ½	3.46	4	1300	2600	3.01	8.13
060-0482-1300	3	4.02	4	1300	2600	3.67	11.03
060-4692-1300	4	5.12	4	1300	2600	5.69	18.80
060-4802-1300	5	6.10	4	1300	2600	6.47	26.90

\* Filled with Concrete



## EAGLE GUNITE 150 PSI HOSE

**Application:** Ultra wear resistant and thick tube, designed for high kink resistance and perfect flow, suitable for air pumping dry sand or cement mixtures to the water mixing nozzle in gunite applications.

**Tube:** ¼" Pure Gum Rubber Tan

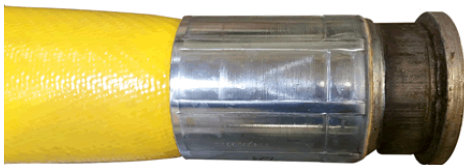
**Cover:** Non marking Pure Gum Blend

**Reinforcement:** Multiple plies of synthetic fabric with an imbedded static wire

**Branding:** Eagle Gunite 150 PSI WP



Part #	ID	OD	WP	Burst	Weight	Std. Length
	in	in	psi	psi	lbs/ft	ft
014-0242-0150	1-1/2	2.38	150	450	1.17	100
014-0328-0150	2	2.88	150	450	1.46	100



## EAGLE FLEXCRETE MORTAR TPU HOSE

**Application:** Lay-flat boom tip hose ideal for ICF forms, columns and tall walls where space is at a minimum.

**Tube:** Extruded thermoplastic polyether based polyurethane (TPU)

**Cover:** Extruded TPU Yellow cover, bonded to lining

**Reinforcement:** Circular woven Aramid Fiber, "extra-strong yarn"

**Branding:** 4" EAGLE FLEXCRETE MORTAR TPU 1250 PSI WP

**Standard Couplings:** 1-Piece High Pressure Rapid Crimp, Heavy Duty

- Meets/Exceeds ASME Requirements
- 1/3 the weight
- Operator Friendly
- More consistent flow at lower placement rates
- Ease of pour in tight areas
- Bright color for visibility and safety
- Superior resistance to weather and aging
- Cleans up easily



JGB Enterprises Eagle FlexCrete is a new alternative in the concrete placement industry. The Eagle FlexCrete answers an industry need for a concrete placement hose that handles easily while placing ICF forms as well as tall walls and columns where space is limited. The Eagle FlexCrete's lay flat construction allows better flow control & lower placement rates than standard boom tip hoses.

Part #	ID	Wall	WP	Tensile Strength		Burst	Weight
	in	in	psi	x1000 lbs	Tons	psi	lbs/ft
008-0643-1250I	4	0.17	1250	172	80	2500	1.34
008-0803-1250I	5	0.17	1250	179	81.5	2500	1.48



## BOOM & DECK PIPE for CONCRETE PLACEMENT

- Sold in various sizes and lengths.

SINGLE WALL				
Description	I.D.	Wall Thickness	Length (ft)	Hardness
BOOM	4.8"/123.4mm	0.188"/7ga	10	58-60Rc
BOOM	4.8"/123.4mm	0.188"/7ga	13	58-60Rc
BOOM	4.8"/123.4mm	0.188"/7ga	16	58-60Rc
DECK	4.8"/123.4mm	0.277"/7mm	10	58-60Rc
DECK	4.8"/123.4mm	0.277"/7mm	16	58-60Rc
DOUBLE WALL				
Description	I.D.	Wall Thickness	Length (ft)	Hardness
BOOM	4.8"/123.4mm	3mm+1.5mm	10	59-61 Rc
BOOM	4.8"/123.4mm	3mm+1.5mm	13	59-61 Rc
BOOM	4.8"/123.4mm	3mm+1.5mm	16	59-61 Rc
DECK	4.8"/123.4mm	4.5mm+3.0mm	10	59-61 Rc
DECK	4.8"/123.4mm	4.5mm+3.0mm	13	59-61 Rc



## SLICK LINE PIPE FOR CONCRETE PLACEMENT

- Sold in various sizes and lengths.
- **Size Range:** from 2" down to 5"

Slickline is welded or seamless steel tubing connected together at joints resulting in a horizontal or vertical pumping system. Slickline pipes are provided in straight 10-foot lengths in various diameters from 2 to 6 inches. Slickline is manufactured from top grade high-carbon content steel tubing unlike ordinary pipe-stock.

Line Size	Wall Thickness	Weight
2.0"	.109"	29 lbs
2.5"	.120"	38 lbs
3.0"	.125"	45 lbs
3.0"	.216"	76 lbs
4.0"	.125"	61 lbs
4.0"	.237"	108 lbs
5.0"	.258"	146 lbs
5.0"	.134"	84 lbs

# ACCESSORIES

## CONCRETE PUMP CLAMPS

- Heavy-duty, Victaulic, or Metric couplings for concrete pumping systems.
- **Size Range:** from 1-1/2" to 5"



ADJUSTABLE CLAMPS	
Description	Weight (lbs)
3" CF Style Adjustable Clamp W/Gasket, HD	7.7
4" CF Style Adjustable Clamp W/Gasket, HD	10.4
5" CF Style Adjustable Clamp W/Gasket, HD	15.0
5" CF Style Adjustable Clamp W/Gasket, ME	13.2

NON-ADJUSTABLE CLAMPS	
Description	Weight (lbs)
1.5" CF Style Clamp W/Gasket, HD	3.1
2" CF Style Clamp W/Gasket, HD	4.0
2.5" CF Style Clamp W/Gasket, HD	4.6
3" CF Style Clamp W/Gasket, HD	8.5
4" CF Style Clamp W/Gasket, HD	11.7
5" CF Style Clamp W/Gasket, HD	14.8
5" CF Style Clamp W/Gasket, ME	15.0

## CONCRETE CLAMP GASKETS

- Gaskets designed to be used with concrete pump clamps.
- **Size Range:** from 1-1/2" to 6"

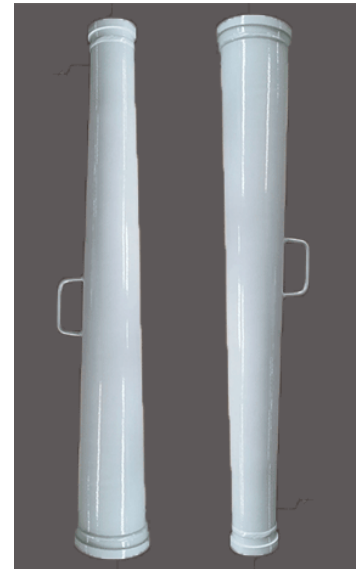


Size
2.0" Grooved
2.5" Grooved
2.0" HD
2.5" HD
3.0" HD
4.0" HD
5.0" HD
5.0" Metric Putz
5.0" Metric Cavity
5.0" Metric V-Style
6.0" HD
6.0" Metric



# STEEL REDUCERS

- Sold in various sizes and lengths.
- Available with heavy-duty or metric ends.
- **Size Range:** from 6" down to 1-1/2"



Size (in)	Ends	Length (in)
2 to 1.5	HD - GR	18
2 to 1.5	HD - HD	18
2.5 to 2	GR - GR	28, 36
2.5 to 2	HD - GR	28, 36
2.5 to 2	HD - HD	28, 36
3 to 2	GR - GR	28, 36
3 to 2	HD - GR	12, 28, 36
3 to 2	HD - HD	12, 28, 36
3 to 2.5	GR - GR	28, 36
3 to 2.5	HD - GR	28, 36
3 to 2.5	HD - HD	28, 36
4 to 2	HD - HD	36
4 to 2.5	HD - HD	36, 41
4 to 3	HD - HD	12, 36
4 to 3.5	HD - HD	12, 15, 36
5 to 3	HD - HD	36
5 to 4	HD - HD	36
5 to 4	ME - HD	15, 36
6 to 5	F - ME	63
6 to 5	P - ME	47
6 to 5	ME - ME	47, 63
6 to 5	HD - HD	47, 63

## PIPE BENDS/ELBOWS

- Sold in various combinations.
- 90° and 45° elbows available.
- **Size Range:** from 2" to 5"



Description	Weight (lbs)
Pipe Bend 2"X90°X16", HD-HD	11.05
Pipe Bend 2.5"X90° X16", HD-HD	12.63
Pipe Bend 3"X45° X16", HD-HD	10.14
Pipe Bend 3"X90° X16", HD-HD	17.70
Pipe Bend 4"X45° X18", HD-HD	16.09
Pipe Bend 4"X90° X18", HD-HD	29.19
Pipe Bend 5"X45° X14", HD-HD	24.25
Pipe Bend 5"X45° X24", HD-HD	33.07
Pipe Bend 5"X45° X48", HD-HD	62.39
Pipe Bend 5"X90° X14", HD-HD	49.23
Pipe Bend 5"X90° X24", HD-HD	63.93
Pipe Bend 5"X90° X48", HD-HD	131.39

## BOOM ELBOWS



Pipe ID	Bend
Metric 5"	90
Metric 5	45
HD 5"	90
HD 5"	45
Metric 5"	30
Metric 5"	20
Metric	32.5
Metric	30
Metric	15
Metric	14

## DOUBLE WALL ELBOWS



Pipe ID	Bend
Metric 5"	90
Metric 5"	45
Metric 5"	30
Metric 5"	20
Metric 5"	32.5
Metric 5"	14

## REDUCING ELBOWS



Pipe ID	Bend	Weight
3" X 2"	90	8 lbs
4" X 3" Cast	90	19 lbs
5" X 3" Cast	90	26 lbs
5" X 4" Cast	90	28 lbs
6" X 5"	90	31 lbs
6" X 4"	90	27 lbs



## CONCRETE CLEAN OUT BALLS

- Sponge Balls for cleaning
- Soft, medium, or hard available
- **Size Range:** from 2" to 6"



Diameter (in)	Weight (lbs)	Density (kg/m <sup>3</sup> )
2" Soft	0.04	185
2-1/2" Soft	0.88	185
3" Soft	0.15	185
4" Soft	0.42	185
5" Soft	0.73	185
6" Soft	1.15	185
2" Medium	0.07	250
2-1/2" Medium	0.13	250
3" Medium	0.22	250
4" Medium	0.26	250
5" Medium	0.57	250
6" Medium	1.41	250
2" Hard	0.66	300
2-1/2" Hard	0.15	300
3" Hard	0.24	300
4" Hard	0.68	300
5" Hard	1.17	300
6" Hard	1.70	300

## SAFETY PRODUCTS



## SHOTCRETE NOZZLE ASSEMBLIES



Part No.	Description
Shot Assy 2.0	2.0" Shotcrete Nozzle Assembly Kit
HN20LS Tips	2.0"x1.25"x7" OAL Rubber Nozzle Only
HD Inserts	Steel Heat-Treated Insert w/ HD End
GR Inserts	Steel Heat-Treated Insert w/ GR End

## CONCRETE WELD-ON ENDS

- Weld-on ends for cement & concrete hose
- **Size Range:** from 2" to 6"



Description	Weight (lbs)
1.5" Weld on End-GR	0.3
1.5" Weld on End-HD	0.3
2" Weld on End-GR	0.5
2" Weld on End-HD	0.9
2.5" Weld on End-GR	0.6
2.5" Weld on End-HD	0.5
3" Weld on End-GR	0.9
3" Weld on End-HD	1.9
4" Weld on End-HD	2.3
5" Weld on End-HD	3.0
5" Weld on End-HD with Insert	4.3
5" Weld on End-ME	2.3
5" Weld on end-ME with step slip over	3.9
6" Weld on End Schwing Female	4.9
6" Weld on End-HD	3.6
6" Weld on End Putz Hi-Pressure	6.6
6" Weld On End-ME	3.7
5" Metric End with Insert for Boom Pipe	3.7
5" Metric End with Insert for Deck Pipe	3.7

## EAGLE AIR® WIRE REINFORCED HOSE

- Application:** Designed as heavy duty air hose for use in mines, construction and industrial applications where maximum service is required.
- Tube:** Blend of synthetic elastomer compound, black, smooth, suitable for water and air, resistant to oil mist
- Cover:** Synthetic elastomer compound, yellow, smooth with cloth impression, weather, ozone and abrasion resistant
- Reinforcement:** Steel wire reinforcement
- Branding:** EAGLE AIR® 600 PSI MAX WP
- Temperature:** -22°F to 200°F
- Lengths:** 100 ft.



### Features:

- High safety against bursting, robust, long lasting

Part #	ID	OD	Plies	WP	Burst Pressure	Bend Radius	Weight
	in	in	psi	psi	in	lbs/ft	
003-0323-0600I	2	2.6	2	600	2400	8	1.69
003-0483-0600I	3	3.7	2	600	2400	15	3.02
003-0640-0500I	4	4.8	2	600	2400	20	4.54

## EAGLE AIR® JACKHAMMER HOSE

- Designed for connection to pneumatic tools
- Available in red or yellow
- Pre-assembled in 3/4" x 50" size
- Coupled with universal couplings

- Tube:** SBR + NR
- Reinforcement:** Spiral Polyester Yarn
- Cover:** EPDM
- Temperature:** -22°F to +176°F
- Branding:** 3/4" Eagle Air® JH 300PSI MAX WP #Q##
- Packaging:** 50 ft. length each with PVC film
- Couplings:** Universal fitting at both ends
- Color:** Red, Yellow
- Oil Resistance:** Limited



Part #	Color	ID	OD	WP	Burst	Standard Length	Reinforcement Spiral
		in	mm	psi	psi	ft	
060-0322-1300	Red	3/4	29.5	300	900	50	2
060-4692-1300	Yellow	3/4	29.5	300	900	50	2

### Locations:

**Williston Branch**  
520 Bean Dr.  
Williston, ND 58801  
(701) 774-2195

**Buffalo Branch**  
2540 Walden Ave.  
Suite 150  
Cheektowaga, NY 14225  
(716) 684-8224

**JGB Corporate**  
115 Metropolitan Dr  
Liverpool, NY 13088  
(315) 451-2770

**St. Louis Branch**  
9707 Green Park Industrial Dr.  
St. Louis, MO 63123  
(314) 487-3144

**Southeast Regional Hub**  
1407 Westinghouse Blvd.  
Suite B  
Charlotte, NC 28273  
(704) 588-9920

**Houston Branch**  
619 E Sam Houston Pkwy.  
Suite 200  
Pasadena, TX 77503  
(281) 930-7777

### Additional Resources:

<p><b>JGB</b> enterprises inc. <b>Eagle Brand Master Catalog</b> INDUSTRIAL &amp; SPECIALTY HOSE PRODUCTS www.jgbhose.com</p>	<p><b>JGB</b> Your Hose &amp; Fitting Connection <b>Oilfield</b> Hoses, Fittings, &amp; Assemblies</p>	<p><b>JGB</b> Your Hose &amp; Fitting Connection <b>LARGE DIAMETER HOSE (LDH) PROGRAM</b></p>	<p><b>CONSTRUCTION ZONE</b> <b>JGB</b> <b>Industrial Rental</b> Hoses, Fittings, &amp; Assemblies</p>
<p><b>JGB Eagle Brand Master Catalog</b></p>	<p><b>Oilfield Catalog Hoses, Fittings &amp; Assemblies</b></p>	<p><b>Large Diameter Hose Catalog</b></p>	<p><b>Industrial Rental Catalog Hoses, Fittings &amp; Assemblies</b></p>