

JGB[®] Enterprises



16" Lay Flat Water Transfer

Eagle Water Transfer PU

Heavy Duty Polyurethane (PU) Layflat 16" ID Large Diameter Hose (LDH)

Application: Construction sites, waste water industry, agriculture and mining, transport of abrasive materials, flexible pipeline even in extreme terrain, irrigation and sludge disposal, for heavy duty service under toughest conditions. Perfectly prepared for hydraulic fraction in shales and oil fields.

Tube: PU

Cover: PU, Ribbed cover or smooth cover

Reinforcement: Polyester-Nylon textile

Temperature: -58°F to 176°F

Branding: EAGLE PU WATER TRANSFER

Color: Black standard, blue, green, or red upon request

Package: Rolled, packed on steel reel

Standard Length: 660 ft (200m)

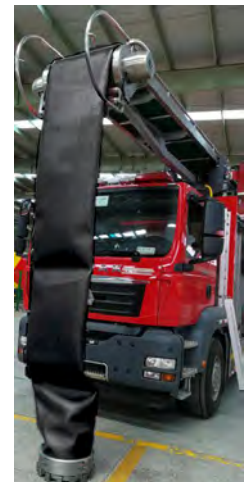
Mfg. Technology: Through-the-weave-technology



ID	Nom. OD	Max WP	Burst	Tolerance	Wall Thickness	Tensile Strength	Weight
in	in	psi/bar	psi/bar	in	in	lbs	lbs/ft
16	16 7/16	115/8	345/24	15.98 - 16.14	0.21	66140	5.09

Friction Loss of Eagle TPU Polyurethane Layflat Hose

Flow Rate		Pressure Drop (bar/200m)				Remark
M3/h	Q{L/min}	10"	12"	14"	16"	
480	8000	0.36				Known Data
600	10000	0.56	0.22	0.10		
900	15000	1.26	0.48	0.22	0.12	
1200	20000	2.22	0.86	0.40	0.21	
Friction Losses (theoretical value)						
2400	40000	8.24	3.19	1.48	0.76	calculated value
Friction loss of coupling (bar)		0.43	0.20	0.11	0.06	
Total friction losses (bar)		8.67	3.39	1.59	0.82	



Download the JGB[®] Mobile App



Connect with us:



www.jgbhose.com

Click for directions:

JGB Headquarters
Liverpool, NY 13088
(315) 451-2770

Buffalo Branch
Cheektowaga, NY 14225
(716) 684-8224

Southeast Hub
Charlotte, NC 28273
(704) 588-9920

St. Louis Branch
St. Louis, MO 63123
(704) 588-9920

Williston Branch
Williston, ND 58801
(701) 774-2195

Houston Branch
Pasadena, TX 77503
(281) 930-7777